



Viharamahadevi Balika Vidyalaya - Kiribathgoda

Information and Communication Technology

Grade 11 – Assignment 03

- **Answer all questions.**

1) Which is not the characteristic of quality information?

- i) Completeness ii) Order iii) Timeliness iv) Accuracy

2) Which is the input device that can be used to correct multi choice question papers?

- i) Light pen ii) MICR iii) OCR iv) OMR

3) Which statement/(s) incorrect regarding computers in first generation?

- a) Used more vacuum tubes in computers.
b) CDs are used as secondary storage.
c) EDVAC is a first generation computer.

- i) a and c ii) b and c iii) Only b iv) Only c

4) Which is the equivalent value of binary 10101100012?

- i) 688_{10} ii) 2541_8 iii) $2B1_{16}$ iv) None of above

5) Which is the equivalent octal value to the decimal number 101?

- i) 5_8 ii) 65_8 iii) 145_8 iv) 64_8

6) How many binary digits are needed to represent decimal 39 in BCD?

- i) 8 ii) 6 iii) 2 iv) 7

7) How many characters are represented by ASCII code?

- i) 7 ii) 128 iii) 16 iv) 256

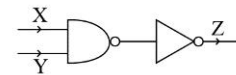
8) Consider the following statements.

- a) 10011_2 is equivalent to 23_8 b) 23_8 is equivalent to 13_{16}
c) 13_{16} is equivalent to 19_{10}

Which of the above statement/(s) is/are true?

- i) Only a ii) Only b iii) Only a and b iv) All above

9) Which of the following truth table is equivalent to given logic circuit?



X	Y	Z
0	0	0
0	1	0
1	0	0
1	1	1

i)

X	Y	Z
0	0	0
0	1	1
1	0	1
1	1	1

ii)

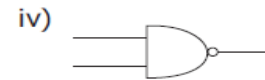
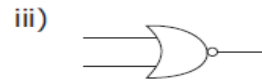
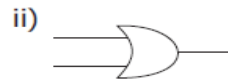
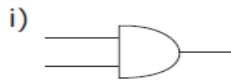
X	Y	Z
0	0	0
0	1	1
1	0	1
1	1	0

iii)

X	Y	Z
0	0	0
0	1	1
1	0	0
1	1	1

iv)

10) A toy with two push buttons is working accurately, when both buttons are pushed. Which gate is represented the logic of above toy?



11) If the ASCII value of C is represented by decimal 67, which is the equivalent ASCII of Q?

i) 1010001

ii) 1010010

iii) 1010000

iv) 1010011

12) Identify incorrect statement/s regarding universal serial bus port.

a) 128 devices can be connected to single port at once.

b) Devices can be connected or removed without disconnect power.

c) USB port can be used as a hub, when connecting more devices at once.

i) Only a

ii) Only b

iii) Only c

iv) Only a and b

13) Two trains run opposite directions through a tunnel with single running way. It would be an example of a transmission in a data channel ,

i) To describe simplex data transmission.

ii) To describe half duplex data transmission.

iii) To describe full duplex data transmission.

iv) To describe direct point data transmission.

14) Which is incorrect about local area network?

i) Geographically, spread in small area.

ii) It is not a private network of any person or institute.

iii) It consists of set of shared communication media, with different interfaces.

iv) Normally, established as Bus, Star and Ring topologies

- Following table shows the first five triangular numbers. Initial values of count and t.number are shown in cells A2 and B2 respectively. Answer question numbers 15 to 18 using given spreadsheet.

	A	B
1	count	t.number
2	1	0
3	1	1
4	2	3
5	3	6
6	4	10
7	5	15
8		
9		

15) The formula, $=B2 + A\$3$ was inserted in cell B3 to find first triangular number. When it is copied to cell B4, the incorrect value appears as the second triangular number. What is the correct function that should be entered in cell B2 to display first five triangular numbers in correct order in the cells B3 to B7?

i) $=A2 + B2$

ii) $=B2 + 1$

iii) $=B2 + A3$

iv) $=A3 + B3$

16) Which is the value you assumed that shown in cell B4, before entered the correct formula?

i) 2

ii) 1

iii) 3

iv) 5

17) Which function can be used to get total of first five triangular numbers?

i) $=\text{Total}(B2:B7)$

ii) $=\text{Sum}(B3,B7)$

iii) $=\text{Sum}(B3;B7)$

iv) $=\text{Sum}(B3:B7)$

18) If the function $=\text{count}(A1:A7)$ is entered in cell A8, always the answer is,

i) a numeric value

ii) an integer

iii) a decimal value

iv) a text

19) Relationship between a class and a student is 1 to many. It means,

i) One student has many classes.

ii) One class has many students.

iii) Have many classes and the classes have many students

iv) Several classes for several students

20) What are the names of two ports shown in pictures respectively?



i) Parallel port, Serial port

ii) Parallel port, Video port

iii) Serial port, Video port

iv) PS/2 port, Parallel port

- Answer questions from 21 to 23 using following pictures.

a



b



c



21) Which cable is used as Antenna wire?

i) a

ii) b

iii) c

iv) b and c

22) Which cable through data transmission is carried out by while reflecting light?

i) a

ii) b

iii) c

iv) None of above.

23) Which cable/(s) are used in telephone networks?

i) a

ii) b

iii) c

iv) a and c

24) Not a management process of an operating system is,

- i) Memory management
- ii) Word management
- iii) Device management
- iv) Process management


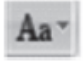


25) Consider the following statements.

In mid 17th century, the *Analytical Engine* was developed by **Charles Babbage**.

What are the formatting used in above sentence.

- i) Super script, Bold, Italic
- ii) Italic, Bold
- iii) Subscript, Italic, Bold
- iv) Shrink Font, Italic, Bold

26) Which tool can be used to copy formatting in a text as it is into another text?

- i) 
- ii) 
- iii) 
- iv) 

27) The facility can't be used with electronic presentations,

- i) Insert audio
- ii) Insert animations to the text and the slides
- iii) Insert hyperlinks to the slides
- iv) Mail merge

28) Consider the following statements of databases

A) Data redundancy - The same data is stored in several tables.

B) Foreign Key - A column or collection of columns in a table when record can be identified uniquely

C) Data encrypting - Translating data in such a way that unauthorized personnel can not read it

Correct statement/(s) of above is/are

- i) A only
- ii) A and B only
- iii) A and C only
- iv) All above

29) Which of the following is not a trait of a database?

- i) Data consistency
- ii) Data duplication
- iii) Increases efficiency
- iv) Increases accuracy

30) To filter data from a database, can be used a

- i) Form
- ii) Reports
- iii) Query
- iv) Labels

31) Which of the following is not a database management system software?

- i) Access ii) Frame Maker iii) Base iv) Oracle

- Use the following tables to answer questions 32 to 34.

Receipt Number	Student Name	Reason of the payment	Amount	Date
B 104	Aruni	Exam fees	200	10/03/2017
B 201	Amaya	Facilities fees	350	15/02/2017
B250	Sumali	Exam fees	200	12/03/2017

32) How many fields and records are there in above table respectively?

- i) 3,5 ii) 5,3 iii) 5,4 iv) 4,5

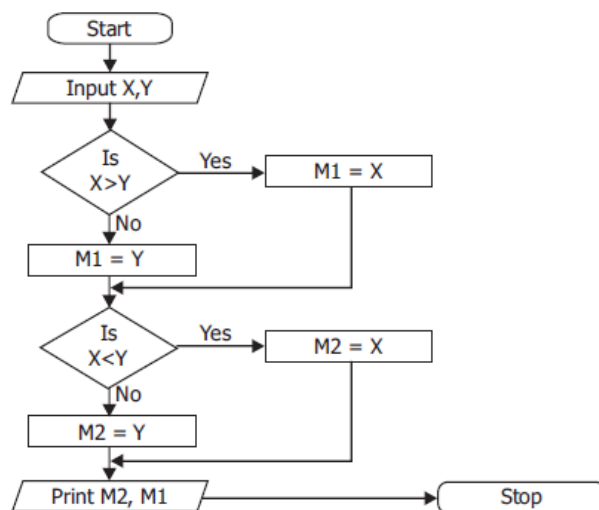
33) Which is the most suitable field for the primary key?

- i) Date ii) Receipt Number iii) Student Name iv) Amount

34) Most suitable data types for receipt number, Student name, reason for the payment and amount are,

- i) Number, text, Text, Text ii) Text, Text, Boolean, Currency
iii) Text, Text, Text, Currency iv) Number, Text, Text, Currency

- Consider the algorithm in given flowchart.



35) What is the control structure used in above flow chart?

- i) Sequence ii) Simple selection iii) Nested if iv) Repetition

36) What would be the output if x=18 and y=20 ?

- i) 18, 18 ii) 20, 18 iii) 18,20 iv) 20,20

- Consider the given Pseudo code segment.

```

Begin
  A=12
  repeat
    A=A-3
  Until A<6
End

```

37) How many times the loop will repeat in above pseudo code?

- i) 1 ii) 2 iii) 3 iv) 4

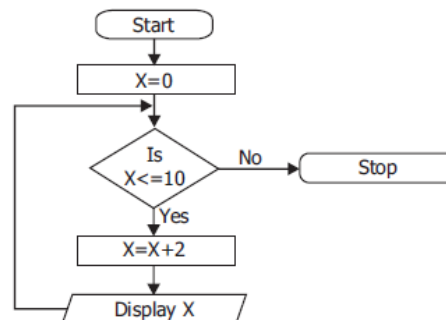
38) What is the value of "A" when the loop is terminated?

- i) 12 ii) 9 iii) 6 iv) 3

39) Which is not a correct identifier of Pascal language?

- i) find_sum ii) stuName iii) No1value iv) 2ndNo

40) Which of the following pseudocode segment is equivalent to the logic of the given flow chart?



- i) Begin
 X=2
 Repeat
 Display X
 X=X+2
 Until X>10
 End
- ii) Begin
 X=0
 if X<=10 then
 X=X+2
 Display X
 end if
 End
- iii) Begin
 X=0
 while X<=10 do
 Display X
 X=X+2
 End while
 End
- iv) Begin
 X=0
 Repeat
 Display X
 X=X+2
 Until X>10
 End